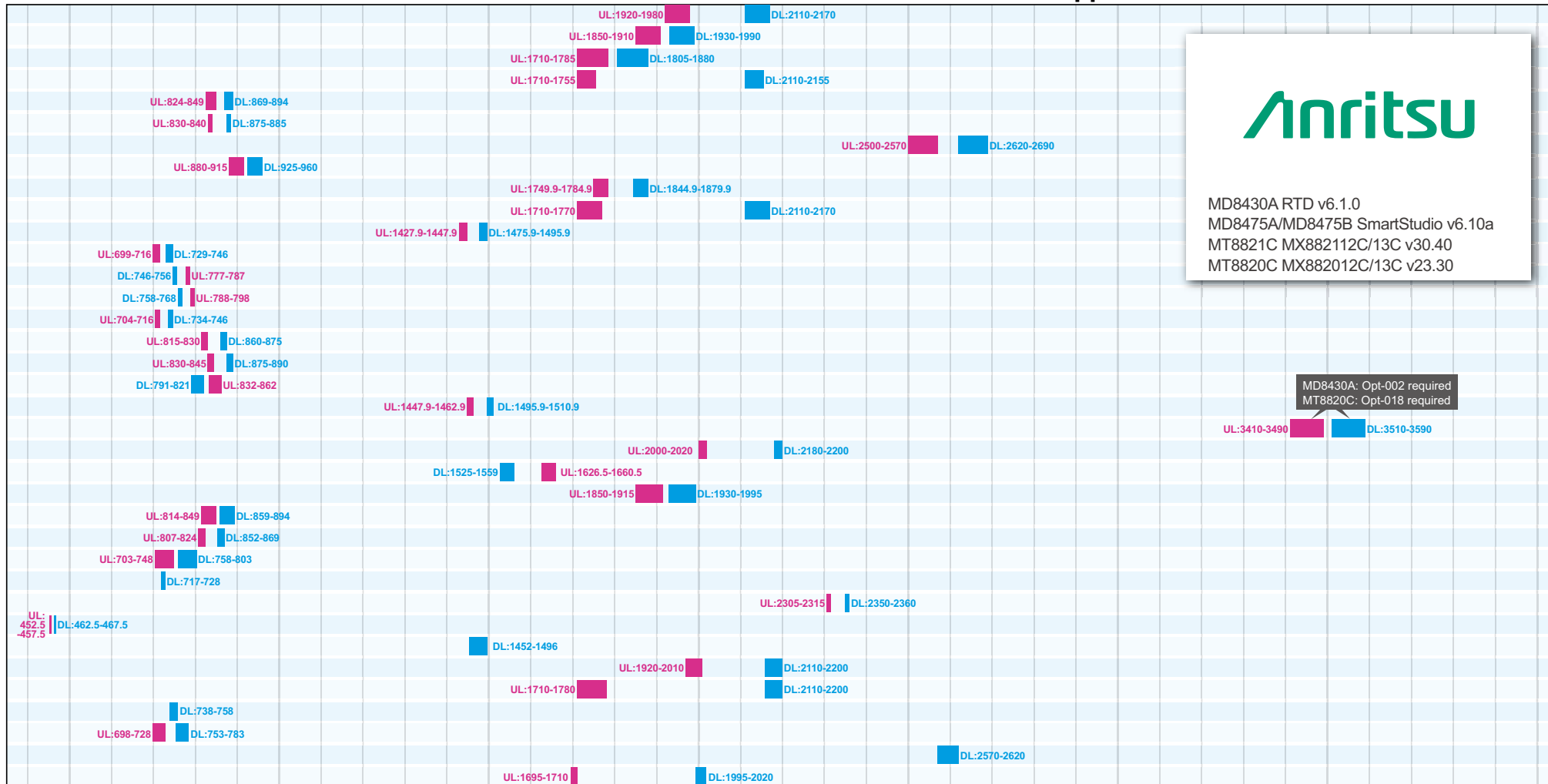


MD8430A/MD8475A/MD8475B/MT8821C/MT8820C E-UTRA Bands Support Table

3GPP TS 36.101 v14.0.0 (2016-06) Table 5.5-1

FDD

Band 1
Band 2
Band 3
Band 4
Band 5
Band 6
Band 7
Band 8
Band 9
Band 10
Band 11
Band 12
Band 13
Band 14
Band 17
Band 18
Band 19
Band 20
Band 21
Band 22
Band 23
Band 24
Band 25
Band 26
Band 27
Band 28
Band 29
Band 30
Band 31
Band 32
Band 65
Band 66
Band 67
Band 68
Band 69
Band 70

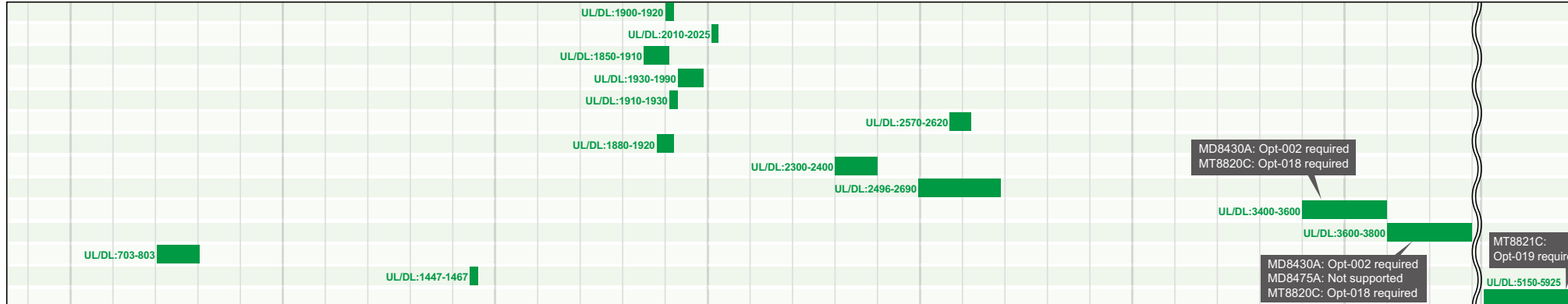


MD8430A RTD v6.1.0
MD8475A/MD8475B SmartStudio v6.10a
MT8821C MX882112C/13C v30.40
MT8820C MX882012C/13C v23.30

MD8430A: Opt-002 required
MT8820C: Opt-018 required

TDD

Band 33
Band 34
Band 35
Band 36
Band 37
Band 38
Band 39
Band 40
Band 41
Band 42
Band 43
Band 44
Band 45
Band 46



MD8430A: Opt-002 required
MT8820C: Opt-018 required

MD8430A: Opt-002 required
MD8475A: Not supported
MT8820C: Opt-018 required

MT8821C:
Opt-019 required

500 MHz 1000 MHz 1500 MHz 2000 MHz 2500 MHz 3000 MHz 3500 MHz 5000 MHz 6000 MHz

MD8430A/MD8475A/MD8475B/MT8821C/MT8820C E-UTRA Bands Support Table

3GPP TS 36.101 v14.0.0 (2016-06)

E-UTRA Operating Bands

Table 5.5-1 (FDD)							
E-UTRA Band	UL Frequency Low - High	DL Frequency Low - High	MD8430A	MD8475A/MD8475B	MT8821C	MT8820C	Comment
1	1920 MHz - 1980 MHz	2110 MHz - 2170 MHz	✓	✓	✓	✓	
2	1850 MHz - 1910 MHz	1930 MHz - 1990 MHz	✓	✓	✓	✓	
3	1710 MHz - 1785 MHz	1805 MHz - 1880 MHz	✓	✓	✓	✓	
4	1710 MHz - 1755 MHz	2110 MHz - 2155 MHz	✓	✓	✓	✓	
5	824 MHz - 849 MHz	869 MHz - 894 MHz	✓	✓	✓	✓	
6	830 MHz - 840 MHz	875 MHz - 885 MHz	✓	✓	✓	✓	
7	2500 MHz - 2570 MHz	2620 MHz - 2690 MHz	✓	✓	✓	✓	
8	880 MHz - 915 MHz	925 MHz - 960 MHz	✓	✓	✓	✓	
9	1749.5 MHz - 1784.5 MHz	1844.5 MHz - 1879.5 MHz	✓	✓	✓	✓	
10	1710 MHz - 1770 MHz	2110 MHz - 2170 MHz	✓	✓	✓	✓	
11	1427.9 MHz - 1462.9 MHz	1475.9 MHz - 1485.9 MHz	✓	✓	✓	✓	
12	699 MHz - 716 MHz	729 MHz - 746 MHz	✓	✓	✓	✓	
13	777 MHz - 787 MHz	746 MHz - 756 MHz	✓	✓	✓	✓	
14	788 MHz - 798 MHz	758 MHz - 768 MHz	✓	✓	✓	✓	
17	704 MHz - 716 MHz	734 MHz - 746 MHz	✓	✓	✓	✓	
18	815 MHz - 830 MHz	860 MHz - 875 MHz	✓	✓	✓	✓	
19	830 MHz - 845 MHz	875 MHz - 890 MHz	✓	✓	✓	✓	
20	832 MHz - 862 MHz	791 MHz - 821 MHz	✓	✓	✓	✓	
21	1447.9 MHz - 1462.9 MHz	1495.9 MHz - 1510.9 MHz	✓	✓	✓	✓	
22	3410 MHz - 3490 MHz	3510 MHz - 3590 MHz	✓	✓	✓	✓	Option-002 is required for MD8430A Option-018 is required for MT8820C
23*	2000 MHz - 2020 MHz	2180 MHz - 2200 MHz	✓	✓	✓	✓	
24	1626.5 MHz - 1665.5 MHz	1525 MHz - 1559.5 MHz	✓	✓	✓	✓	Band 29 is used for DL only
25	1850 MHz - 1915 MHz	1930 MHz - 1995 MHz	✓	✓	✓	✓	
26	814 MHz - 849 MHz	869 MHz - 894 MHz	✓	✓	✓	✓	
27	807 MHz - 824 MHz	852 MHz - 869 MHz	✓	✓	✓	✓	
28	703 MHz - 748 MHz	758 MHz - 803 MHz	✓	✓	✓	✓	
29	N/A	717 MHz - 728 MHz	✓	✓	✓	✓	
30	2305 MHz - 2315 MHz	2350 MHz - 2360 MHz	✓	✓	✓	✓	
31	452.5 MHz - 457.5 MHz	462.5 MHz - 467.5 MHz	✓	✓	✓	✓	
32	N/A	1452 MHz - 1496 MHz	✓	✓	✓	✓	
65	1920 MHz - 2010 MHz	2110 MHz - 2200 MHz	✓	✓	✓	✓	
66	1710 MHz - 1780 MHz	2110 MHz - 2200 MHz	✓	✓	✓	✓	
67	N/A	738 MHz - 758 MHz	✓	✓	✓	✓	
68	698 MHz - 728 MHz	753 MHz - 783 MHz	✓	✓	✓	✓	
69	N/A	2570 MHz - 2620 MHz	✓	✓	✓	✓	
70	1695 MHz - 1710 MHz	1995 MHz - 2020 MHz	✓	✓	✓	✓	

*: Band 6, 23 is not applicable

Table 5.5-1 (TDD)							
E-UTRA Band	UL Frequency Low - High	DL Frequency Low - High	MD8430A	MD8475A/MD8475B	MT8821C	MT8820C	Comment
33	1900 MHz - 1920 MHz	1900 MHz - 1920 MHz	✓	✓	✓	✓	
34	2010 MHz - 2025 MHz	2010 MHz - 2025 MHz	✓	✓	✓	✓	
35	1850 MHz - 1910 MHz	1850 MHz - 1910 MHz	✓	✓	✓	✓	
36	1930 MHz - 1990 MHz	1930 MHz - 1990 MHz	✓	✓	✓	✓	
37	1910 MHz - 1930 MHz	1910 MHz - 1930 MHz	✓	✓	✓	✓	
38	2570 MHz - 2620 MHz	2570 MHz - 2620 MHz	✓	✓	✓	✓	
39	1880 MHz - 1920 MHz	1880 MHz - 1920 MHz	✓	✓	✓	✓	
40	2300 MHz - 2400 MHz	2300 MHz - 2400 MHz	✓	✓	✓	✓	
41	2496 MHz - 2690 MHz	2496 MHz - 2690 MHz	✓	✓	✓	✓	
42	3400 MHz - 3600 MHz	3400 MHz - 3600 MHz	✓	✓	✓	✓	Option-002 is required for MD8430A Option-018 is required for MT8820C
43	3600 MHz - 3800 MHz	3600 MHz - 3800 MHz	✓	B	✓	✓	Option-002 is required for MD8430A Option-018 is required for MT8820C B: MD8475B only
44	703 MHz - 803 MHz	703 MHz - 803 MHz	✓	✓	✓	✓	
45	1447 MHz - 1467 MHz	1447 MHz - 1467 MHz	✓	✓	✓	✓	
46	5150 MHz - 5925 MHz	5150 MHz - 5925 MHz	✓	B	✓	✓	Option-006 is required for MD8430A Option-019 is required for MT8821C B: MD8475B only

Inter-band CA Operating Bands

Table 5.5A-1 (FDD)					
E-UTRA CA Band	MD8430A	MD8475A/MD8475B	MT8821C	MT8820C	Comment
CA 1	✓	✓	✓	✓	
CA 2	✓	✓	✓	✓	
CA 3	✓	✓	✓	✓	
CA 5	✓	✓	✓	✓	
CA 7	✓	✓	✓	✓	
CA 8	✓	✓	✓	✓	
CA 12	✓	✓	✓	✓	
CA 23	✓	✓	✓	✓	
CA 27	✓	✓	✓	✓	
CA 66	✓	✓	✓	✓	
CA 70	✓	✓	✓	✓	

Table 5.5A-1 (TDD)					
E-UTRA CA Band	MD8430A	MD8475A/MD8475B	MT8821C	MT8820C	Comment
CA 38	✓	✓	✓	✓	
CA 39	✓	✓	✓	✓	
CA 40	✓	✓	✓	✓	
CA 41	✓	✓	✓	✓	
CA 42	✓	✓	✓	✓	Option-002 is required for MD8430A Option-018 is required for MT8820C

Table 5.5A-2 (two bands, FDD)					
E-UTRA CA Band	MD8430A	MD8475A/MD8475B	MT8821C	MT8820C	Comment
CA 1-3	✓	✓	✓	✓	
CA 1-3-3	✓	✓	✓	✓	
CA 1-5	✓	✓	✓	✓	
CA 1-7	✓	✓	✓	✓	
CA 1-8	✓	✓	✓	✓	
CA 1-11	✓	✓	✓	✓	
CA 1-18	✓	✓	✓	✓	
CA 1-19	✓	✓	✓	✓	
CA 1-20	✓	✓	✓	✓	
CA 1-21	✓	✓	✓	✓	
CA 1-26	✓	✓	✓	✓	
CA 1-28	✓	✓	✓	✓	
CA 2-4	✓	✓	✓	✓	
CA 2-4-4	✓	✓	✓	✓	
CA 2-5	✓	✓	✓	✓	
CA 2-5-5	✓	✓	✓	✓	
CA 2-7	✓	✓	✓	✓	
CA 2-7-7	✓	✓	✓	✓	
CA 2-12	✓	✓	✓	✓	
CA 2-13	✓	✓	✓	✓	
CA 2-21-3	✓	✓	✓	✓	
CA 2-17	✓	✓	✓	✓	
CA 2-28	✓	✓	✓	✓	
CA 2-29	✓	✓	✓	✓	Band 29 is used for DL only
CA 2-30	✓	✓	✓	✓	
CA 2-38	✓	✓	✓	✓	
CA 2-66	✓	✓	✓	✓	
CA 2-66-66	✓	✓	✓	✓	
CA 3-5	✓	✓	✓	✓	
CA 3-3-5	✓	✓	✓	✓	
CA 3-7	✓	✓	✓	✓	
CA 3-3-7	✓	✓	✓	✓	
CA 3-8	✓	✓	✓	✓	
CA 3-3-8	✓	✓	✓	✓	
CA 3-19	✓	✓	✓	✓	
CA 3-20	✓	✓	✓	✓	
CA 3-3-20	✓	✓	✓	✓	
CA 3-21	✓	✓	✓	✓	
CA 3-26	✓	✓	✓	✓	
CA 3-27	✓	✓	✓	✓	
CA 3-28	✓	✓	✓	✓	
CA 3-31	✓	✓	✓	✓	
CA 3-69	✓	✓	✓	✓	Band 69 is used for DL only
CA 4-5	✓	✓	✓	✓	
CA 4-4-5	✓	✓	✓	✓	
CA 4-7	✓	✓	✓	✓	
CA 4-4-7	✓	✓	✓	✓	
CA 4-7-7	✓	✓	✓	✓	
CA 4-12	✓	✓	✓	✓	
CA 4-4-12	✓	✓	✓	✓	
CA 4-13	✓	✓	✓	✓	
CA 4-14	✓	✓	✓	✓	
CA 4-4-13	✓	✓	✓	✓	
CA 4-17	✓	✓	✓	✓	
CA 4-27	✓	✓	✓	✓	
CA 4-28	✓	✓	✓	✓	
CA 4-29	✓	✓	✓	✓	Band 29 is used for DL only
CA 4-4-29	✓	✓	✓	✓	Band 29 is used for DL only
CA 4-30	✓	✓	✓	✓	
CA 4-4-30	✓	✓	✓	✓	
CA 5-7	✓	✓	✓	✓	
CA 5-12	✓	✓	✓	✓	
CA 5-13	✓	✓	✓	✓	
CA 5-17	✓	✓	✓	✓	
CA 5-25	✓	✓	✓	✓	
CA 5-29	✓	✓	✓	✓	
CA 5-30	✓	✓	✓	✓	Band 29 is used for DL only
CA 5-66	✓	✓	✓	✓	
CA 5-66-66	✓	✓	✓	✓	
CA 7-8	✓	✓	✓	✓	
CA 7-8-8	✓	✓	✓	✓	
CA 7-12	✓	✓	✓	✓	
CA 7-20	✓	✓	✓	✓	
CA 7-22	✓	✓	✓	✓	
CA 7-28	✓	✓	✓	✓	
CA 7-28-28	✓	✓	✓	✓	
CA 8-11	✓	✓	✓	✓	
CA 8-11-11	✓	✓	✓	✓	
CA 8-11-18	✓	✓	✓	✓	
CA 8-28	✓	✓	✓	✓	
CA 11-18	✓	✓	✓	✓	
CA 12-35	✓	✓	✓	✓	
CA 12-30	✓	✓	✓	✓	
CA 12-66	✓	✓	✓	✓	
CA 12-66-66	✓	✓	✓	✓	
CA 13-66	✓	✓	✓	✓	
CA 13-66-66	✓	✓	✓	✓	
CA 18-28	✓	✓	✓	✓	
CA 19-21	✓	✓	✓	✓	
CA 19-28	✓	✓	✓	✓	
CA 20-28	✓	✓	✓	✓	
CA 20-31	✓	✓	✓	✓	
CA 20-32	✓	✓	✓	✓	Band 32 is used for DL only
CA 20-67	✓	✓	✓	✓	Band 67 is used for DL only

Table 5.5A-2 (two bands, FDD)					
E-UTRA CA Band	MD8430A	MD8475A/MD8475B	MT8821C	MT8820C	Comment
CA 23-29	✓	✓	✓	✓	Band 29 is used for DL only
CA 25-26	✓	✓	✓	✓	
CA 29-30	✓	✓	✓	✓	Band 29 is used for DL only
CA 29-66	✓	✓	✓	✓	Band 29 is used for DL only

Table 5.5A-2 (two bands, TDD)					
E-UTRA CA Band	MD8430A	MD8475A/MD8475B	MT8821C	MT8820C	Comment
CA 38-40	✓	✓	✓	✓	
CA 39-41	✓	✓	✓	✓	
CA 41-42	✓	✓	✓	✓	Option-002 is required for MD8430A Option-018 is required for MT8820C
CA 41-46	✓	B	✓	✓	Option-005 is required for MD8430A Option-019 is required for MT8821C
CA 42-46	✓	B	✓	✓	Option-006 is required for MD8430A Option-019 is required for MT8821C

Table 5.5A-2 (two bands, FDD-TDD)					
E-UTRA CA Band	MD8430A	MD8475A/MD8475B	MT8821C	MT8820C	Comment
CA 1-38	✓	✓	✓	✓	
CA 1-40	✓	✓	✓	✓	
CA 1-41	✓	✓	✓	✓	
CA 1-42	✓	✓	✓	✓	Option-002 is required for MD8430A Option-018 is required for MT8820C
CA 1-46	✓	B	✓	✓	Option-019 is required for MT8821C
CA 2-46	✓	B	✓	✓	
CA 3-38	✓	✓	✓	✓	
CA 3-40	✓	✓	✓	✓	
CA 3-41	✓	✓	✓	✓	
CA 3-42	✓	✓	✓	✓	Option-002 is required for MD8430A Option-018 is required for MT8820C
CA 3-46	✓	B	✓	✓	Option-019 is required for MT8821C
CA 4-46	✓	B	✓	✓	Option-019 is required for MT8821C
CA 5-38	✓	✓	✓	✓	
CA 5-40	✓	✓	✓	✓	
CA 5-46	✓	B	✓	✓	
CA 7-40	✓	✓	✓	✓	
CA 7-42	✓	✓	✓	✓	Option-002 is required for MD8430A Option-018 is required for MT8820C
CA 7-42-42	✓	✓	✓	✓	Option-002 is required for MD8430A Option-018 is required for MT8820C
CA 7-46	✓	B	✓	✓	Option-019 is required for MT8821C
CA 8-39	✓	✓	✓	✓	
CA 8-40	✓	✓	✓	✓	
CA 8-41	✓	✓	✓	✓	
CA 8-42	✓	✓	✓	✓	Option-002 is required for MD8430A Option-018 is required for MT8820C
CA 8-42-42	✓	✓	✓	✓	Option-002 is required for MD8430A Option-018 is required for MT8820C
CA 11-41	✓	✓	✓	✓	
CA 11-42	✓	✓	✓	✓	Option-002 is required for MD8430A Option-018 is required for MT8820C
CA 19-42	✓	✓	✓	✓	Option-002 is required for MD8430A Option-018 is required for MT8820C
CA 20-38	✓	✓	✓		